

## TURBO SURFACE

Product Images

### APPLICATION AREAS:

Home, Office buildings, Retail, Sports facilities, Studio, Stage, Supermarkets, library



Dimming  
Optional



RF Control



Smart Lighting



CCT Tuning



Google or  
Alexa Voice

## TECHNICAL SPECIFICATIONS

### PRODUCT REFERENCE

ITEM CODE	TURBO SURFACE 12
ENVIRONMENT	Indoor
INSTALLATION	Surface

### CONSTRUCTION AND MATERIALS

SIZE OUT SIDE MM	63 Dia x 140
CUT OUT SIZE (MM)	-
HOUSING	Extruded Aluminium
LENS / DIFFUSER	Tempered Glass
REFLECTOR	PC High Purity Metallised
SURFACE FINISH	White/Black/Custom Powder Coated
IP rating	40

### THERMAL MANAGEMENT

HEAT SINK MATERIAL	Aluminium
COOLING TECHNIQUE	Passive

### OPTICAL SYSTEM

BEAM ANGLE	15°, 24°, 36°, 60°
ILLUMINATION MODE	Direct Lighting
SWIVEL	No

**LIGHT TECHNOLOGY**

<b>LED FITTED</b>	Bridgelux
<b>DELIVERED LUMENS</b>	1380 / 1320 / 1260
<b>CCT (K)</b>	6000 / 4000 / 3000
<b>Tunable</b>	On Request
<b>LED BINNING</b>	3 Step MacAdam
<b>CRI (Ra)</b>	80 / 90
<b>LED LIFE L70</b>	40,000 HRS
<b>LUMINAIRE</b>	1920 / 1860 / 1800
<b>LUMINOUS FLUX</b>	
<b>only fore internal use</b>	160
<b>LUMINOUS EFFICACY</b>	115 Lumens / Watt

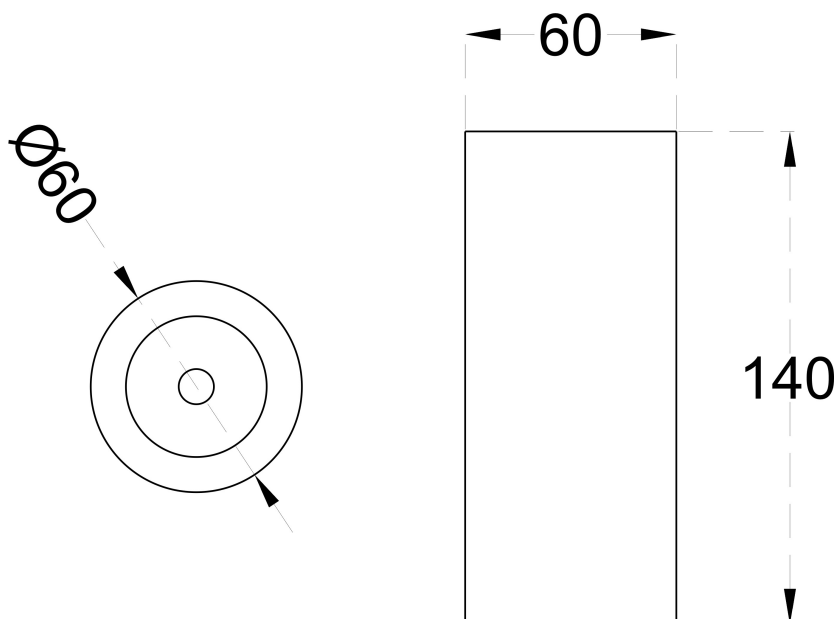
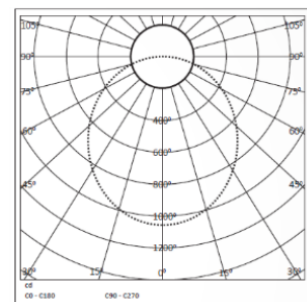
**ELECTRICAL SYSTEM**

<b>(UGR)</b>	<19
<b>INPUT VOLTAGE</b>	220 TO 240 Vac
<b>INPUT POWER</b>	12W
<b>POWER FACTOR</b>	>0.95
<b>THD</b>	<10%
<b>CONTROL GEAR</b>	IN BUILT
<b>MOUNTING</b>	
<b>DRIVER PROTECTION</b>	OVP,Short Circuit,Surge
<b>DIMMING</b>	Phase / Analog / Dali / RF / APP
<b>EMERGENCY</b>	On Request
<b>BATTERY BACKUP</b>	

**PACKAGING DETAILS**

PACKING QTY -

GROSS WEIGHT -

CARTOON SIZE -  
(LXBXH)**DIMENSIONS****PHOTOMETRIC**

8 Raju industrial estate, Penkar pada, Near  
dahisar check naka, Mira road 401107

**NOTE :** The technical data sheet with design registration stamp is the property of Arcade Lighting India Pvt. Ltd. & protected under Intellectual Property law, and it is restricted for sharing with other lighting suppliers

---

Technical parameters are subjected to change time to time in order to improve product performance and reliability

BP-RV00 AR/FRT/TEC/TDS/01