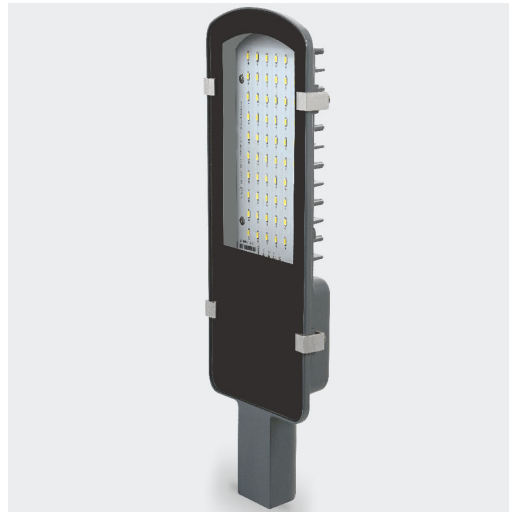


## STREET LIGHT

Product Images

### APPLICATION AREAS:

Sports facilities, Studio,  
Stage, Supermarkets, Industrial buildings



## TECHNICAL SPECIFICATIONS

### PRODUCT REFERENCE

ITEM CODE	STREET LIGHT 30
ENVIRONMENT	OUTDOOR POLE MOUNTED
INSTALLATION	MOUNTED

### CONSTRUCTION AND MATERIALS

SIZE OUT SIDE MM	315x165
CUT OUT SIZE (MM)	-
HOUSING	Die Cast Aluminium
LENS / DIFFUSER	Tempered Glass
REFLECTOR	N/A
SURFACE FINISH	GREY POWDER COATED
IP rating	65

### THERMAL MANAGEMENT

HEAT SINK MATERIAL	Aluminium
COOLING TECHNIQUE	Passive

### OPTICAL SYSTEM

BEAM ANGLE	110°
ILLUMINATION MODE	Indirect Lighting
SWIVEL	No

### LIGHT TECHNOLOGY

<b>LED FITTED</b>	Bridgelux
<b>DELIVERED LUMENS</b>	3900 / 3750 / 3600
<b>CCT (K)</b>	6000 / 4000 / 3000
<b>Tunable</b>	On Request
<b>LED BINNING</b>	3 Step MacAdam
<b>CRI (Ra)</b>	80 / 90
<b>LED LIFE L70</b>	45,000 HRS
<b>LUMINAIRE</b>	4200 / 4050 / 3900
<b>LUMINOUS FLUX</b>	
<b>only fore internal use</b>	140
<b>LUMINOUS EFFICACY</b>	130 Lumens / Watt

### ELECTRICAL SYSTEM

<b>(UGR)</b>	<18
<b>INPUT VOLTAGE</b>	220 TO 240 Vac
<b>INPUT POWER</b>	30W
<b>POWER FACTOR</b>	>0.95
<b>THD</b>	<10%
<b>CONTROL GEAR</b>	IN BUILT
<b>MOUNTING</b>	
<b>DRIVER PROTECTION</b>	OVP,Short Circuit,Surge
<b>DIMMING</b>	OPTION/AL
<b>EMERGENCY</b>	On Request
<b>BATTERY BACKUP</b>	

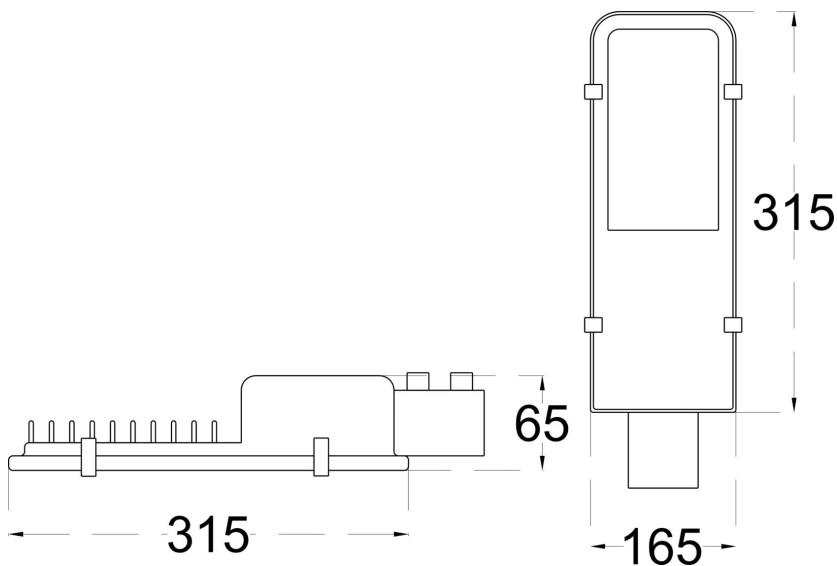
### PACKAGING DETAILS

**PACKING QTY -**

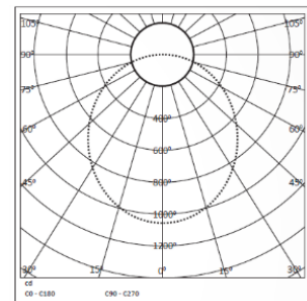
**GROSS WEIGHT -**

**CARTOON SIZE -  
(LXBXH)**

### DIMENSIONS



### PHOTOMETRIC



### ARCADE LIGHTING INDUSTRIES PVT LTD

8 Raju industrial estate, Penkar pada, Near  
dahisar check naka, Mira road 401107

**NOTE :** The technical data sheet with design registration stamp is the property of Arcade Lighting India Pvt. Ltd. & protected under Intellectual Property law, and it is restricted for sharing with other lighting suppliers

---

Technical parameters are subjected to change time to time in order to improve product performance and reliability  
BP-RV00 AR/FRT/TEC/TDS/01

