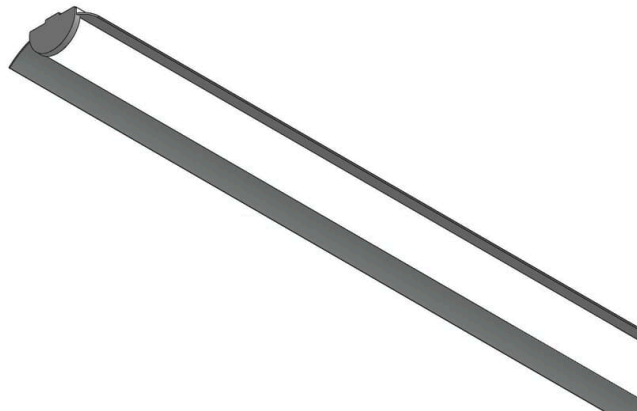


## LED INDUSTRIAL 30

Product Images

### APPLICATION AREAS:

Sports facilities, Studio,  
Stage, Supermarkets, Industrial buildings



Low Glare



Green Energy



THD  
<10%



PF  
>0.95



Driver Protection  
OVP, Surge,  
Short Circuit

## TECHNICAL SPECIFICATIONS

### PRODUCT REFERENCE

ITEM CODE	LED INDUSTRIAL
ENVIRONMENT	Indoor SUSPENDED
INSTALLATION	Suspended

### CONSTRUCTION AND MATERIALS

SIZE OUT SIDE MM	1193x104x40
CUT OUT SIZE (MM)	-
HOUSING	Extruded Aluminium
LENS / DIFFUSER	High Transmission PS
REFLECTOR	N/A
SURFACE FINISH	WHITE POWDER COATED
IP rating	44

### THERMAL MANAGEMENT

HEAT SINK MATERIAL	Aluminium
COOLING TECHNIQUE	Passive

### OPTICAL SYSTEM

BEAM ANGLE	110°
ILLUMINATION MODE	Indirect Lighting
SWIVEL	No

### LIGHT TECHNOLOGY

<b>LED FITTED</b>	Bridgelux
<b>DELIVERED LUMENS</b>	3900 / 3750 / 3600
<b>CCT (K)</b>	6000 / 4000 / 3000
<b>Tunable</b>	On Request
<b>LED BINNING</b>	3 Step MacAdam
<b>CRI (Ra)</b>	80 / 90
<b>LED LIFE L70</b>	45,000 HRS
<b>LUMINAIRE</b>	4200 / 4050 / 3900
<b>LUMINOUS FLUX</b>	
<b>only fore internal use</b>	140
<b>LUMINOUS EFFICACY</b>	130 Lumens / Watt

### ELECTRICAL SYSTEM

<b>(UGR)</b>	<17
<b>INPUT VOLTAGE</b>	220 TO 240 Vac
<b>INPUT POWER</b>	30W
<b>POWER FACTOR</b>	>0.95
<b>THD</b>	<10%
<b>CONTROL GEAR</b>	Remote
<b>MOUNTING</b>	
<b>DRIVER PROTECTION</b>	OVP,Short Circuit,Surge
<b>DIMMING</b>	OPTION/AL
<b>EMERGENCY</b>	On Request
<b>BATTERY BACKUP</b>	

### PACKAGING DETAILS

**PACKING QTY -**

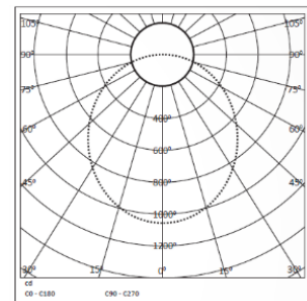
**GROSS WEIGHT -**

**CARTOON SIZE -  
(LXBXH)**

### DIMENSIONS



### PHOTOMETRIC



### **ARCADE LIGHTING INDUSTRIES PVT LTD**

8 Raju industrial estate, Penkar pada, Near  
dahisar check naka, Mira road 401107

**NOTE :** The technical data sheet with design registration stamp is the property of Arcade Lighting India Pvt. Ltd. & protected under Intellectual Property law, and it is restricted for sharing with other lighting suppliers

Technical parameters are subjected to change time to time in order to improve product performance and reliability

BP-RV00 AR/FRT/TEC/TDS/01